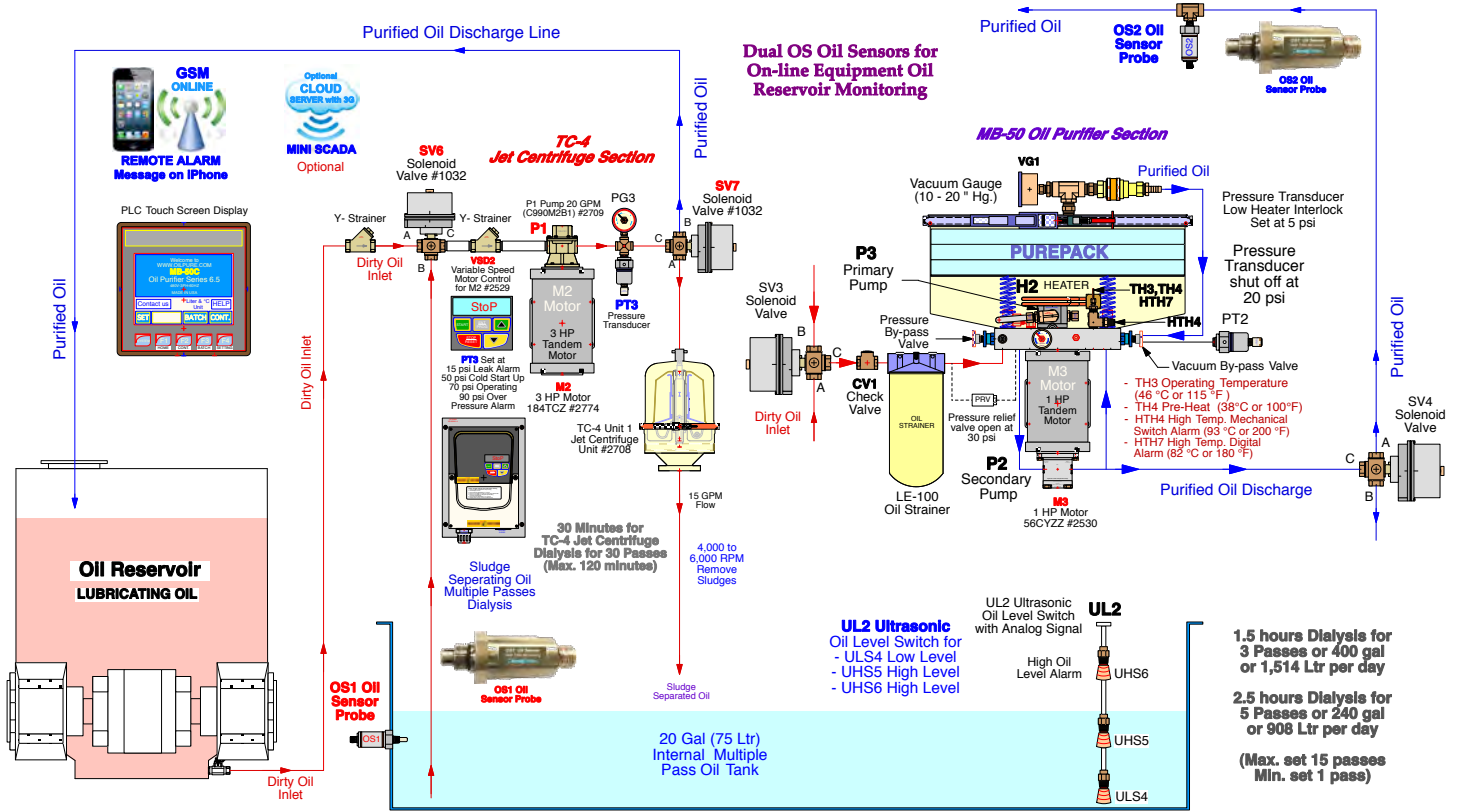


Specifications are subject to change without notice.

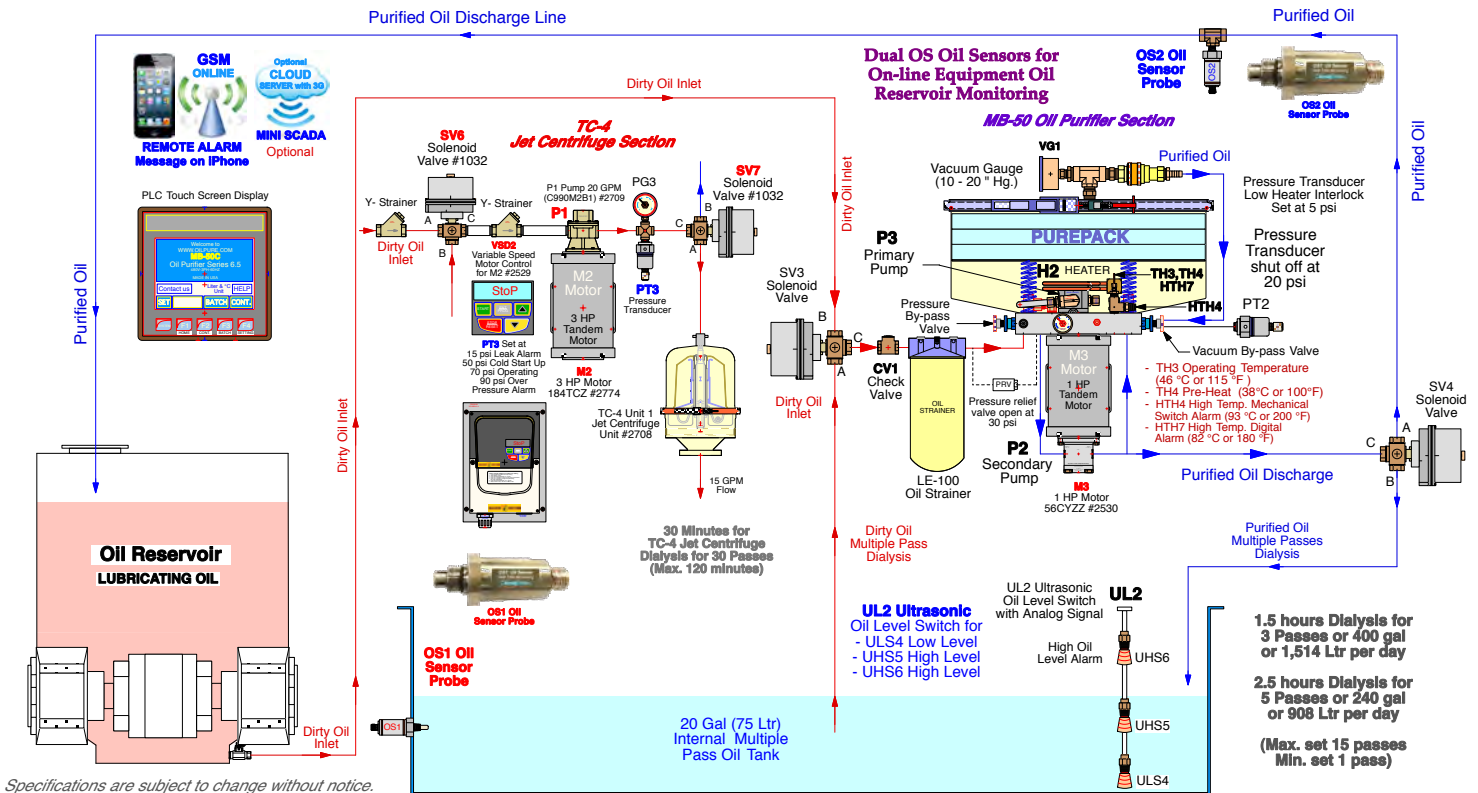
**240 to 400 Gallons per Day  
Oil Recycling Capacity**

**Manual Mode Continuous Oil Dialysis for  
TC-4 Centrifuge Fluid Flow Diagram  
MB-50C Oil Recycling Machine Series 6.5, 480V-3ph**



**240 to 400 Gallons per Day  
Oil Recycling Capacity**

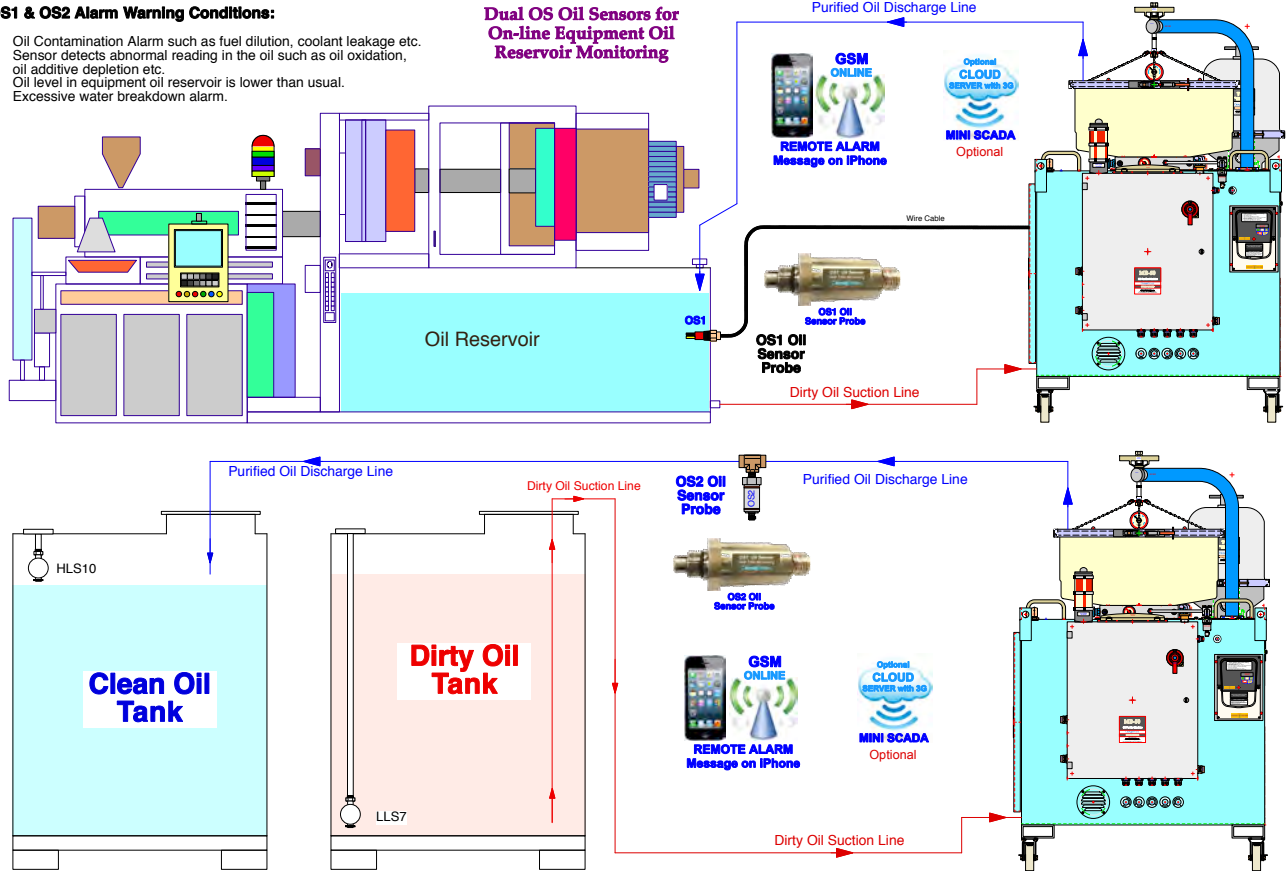
**Manual Mode Continuous Oil Dialysis for  
MB-50 Oil Purifier Fluid Flow Diagram  
MB-50C Oil Recycling Machine Series 6.5, 480V-3ph**



Specifications are subject to change without notice.

**OS1 & OS2 Alarm Warning Conditions:**

1. Oil Contamination Alarm such as fuel dilution, coolant leakage etc.
2. Sensor detects abnormal reading in the oil such as oil oxidation, oil additive depletion etc.
3. Oil level in equipment oil reservoir is lower than usual.
4. Excessive water breakdown alarm.



**Operation Includes:**

**1. MB-50 PurePack Oil Dialysis Section:**

- Particulate removal down to 1 to 3 micron or get ISO 17/14/11 to ISO 16/13/10 oil cleanliness.
- PurePack chemical filter can absorb emulsified water down to less than 100 ppm from 1,500 ppm.
- Remove oxidation by-products causing high acidity reading in Total Acid Number (TAN).
- 50 GPH flow capacity with over 90% filtration efficiency.
- Good for oil reservoir from 500 to 1,000 gal capacity.
- Low operating pressure at 10 psi. Auto stop operation at 20 psi pressure or timer switch at 1,000 hours (6 wks).

**2. TC-4 Dual Jet Centrifuge Section:**

- 4,000 to 6,000 rpm high speed G-Force centrifuge.
- Remove 3 to 5 pounds of sludge per day.
- TC-4 Jet Centrifuge unit at 15 GPM for GPM pump capacity with multiple pass separation for effective sludge build up.
- Excellent application to remove sludge from Waylube in Cold Header Machines or Wire Drawing Machine or Cutting Oil or Quenching Oil.
- Low maintenance as it takes about 5 minutes to clean sludge from centrifuge bell unit.

**3. Dual OS Oil Sensor Monitoring Section:**

- Dual OS Oil Sensor is an on-line oil condition monitoring device which continuously monitors oil degradation and disrupted water breakdown. When oil condition in the oil reservoir degrades to the alarming level, OS will send analog signal to PLC to display the new oil changing status.
- OS Oil Sensor signal and oil degradation data curve can be stored for 3 months and downloaded to PC laptop computer through USB. Oil degradation will be monitored and displayed in a curve which indicates the lubrication quality.
- OS1 will monitor dirty oil at the oil inlet while OS2 will monitor the purified oil after MB-50C. Both of the degradation curves will display on PLC for comparison.

**4. MB-50C Integrated Features (MB-50C = MB-50 + TC-4 + OS + GSM):**

- GSM wireless remote control that can send alarm in SMS text message up to 6 mobile phones with security password. MB-50C operation can be remotely operated by mobile phone by sending SMS text message codes to turn off the MB-50C.
- Automatic operation by Programmable Logic Control (PLC) with Micro SD memory card.
- Ultrasonic non contact oil level switches with analog signal for internal tank control to prevent malfunction from excess oil contamination.
- Dual oil purification in both Batch-to-Batch Oil Recycling Operation and Continuous Oil Dialysis Operation with Built-in multiple pass internal 25 gal oil tank.
- Variable Speed Drive Control pump motor with analog signal for motor soft start long life and automatic oil pressure to control G-Force in TC-4 Centrifuge.

Specifications are subject to change without notice.

